

## AF/LE Purified Anti-Human CD40 Antibody[G28.5]

Catalog No. E-AB-F12140

**Note:** Centrifuge before opening to ensure complete recovery of vial contents.

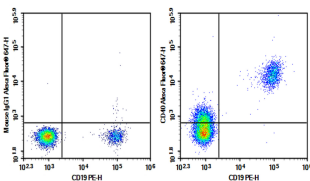
### Description

<b>Reactivity</b>	Human
<b>Immunogen</b>	Recombinant Human CD40 protein
<b>Host</b>	Mouse
<b>Isotype</b>	Mouse IgG1, $\kappa$
<b>Clone</b>	G28.5
<b>Purification</b>	>98%, Protein A/G purified
<b>Conjugation</b>	Unconjugated
<b>Buffer</b>	Sterile PBS. < 1.0 EU per mg of the antibody as determined by the LAL method

### Applications Recommended Dilution

**FCM** 2  $\mu\text{g/mL}$  ( $1 \times 10^5$ - $5 \times 10^5$  cells)

### Data



Human peripheral blood lymphocytes were stained with 0.2  $\mu\text{g}$  AF/LE Purified Anti-Human CD40 Antibody[G28.5](Right) and 0.2  $\mu\text{g}$  Mouse IgG1,  $\kappa$  Isotype Control(Left), followed by Alexa Fluor® 647-conjugated Goat Anti-Mouse IgG Secondary Antibody, then anti-Human CD19 PE-conjugated Monoclonal Antibody.

### Preparation & Storage

**Storage** Store at 4°C valid for 12 months or -20°C valid for long term storage, avoid freeze / thaw cycles. This preparation contains no preservatives, thus it should be handled under aseptic conditions.

### Background

CD40 is a 48 kD type I glycoprotein also known as BP50. It is a member of the TNFR superfamily primarily expressed on B cells, macrophages, follicular dendritic cells, endothelial cells, fibroblasts, and at low levels on plasma cells. CD40 has been reported to be involved in B cell differentiation, costimulation, isotype class-switching, and protection of B cells from apoptosis. Additionally, CD40 is important for T cell-B cell interactions. The ligand of CD40 is CD154 (CD40 ligand).

### For Research Use Only

---

## For Research Use Only

Toll-free: 1-888-852-8623

Web: [www.elabscience.com](http://www.elabscience.com)

Tel: 1-832-243-6086

Email: [techsupport@elabscience.com](mailto:techsupport@elabscience.com)

Fax: 1-832-243-6017